

Flash (SSDs are gonna save everyone of us)

code4lib, Feb. 2009

Toke Eskildsen

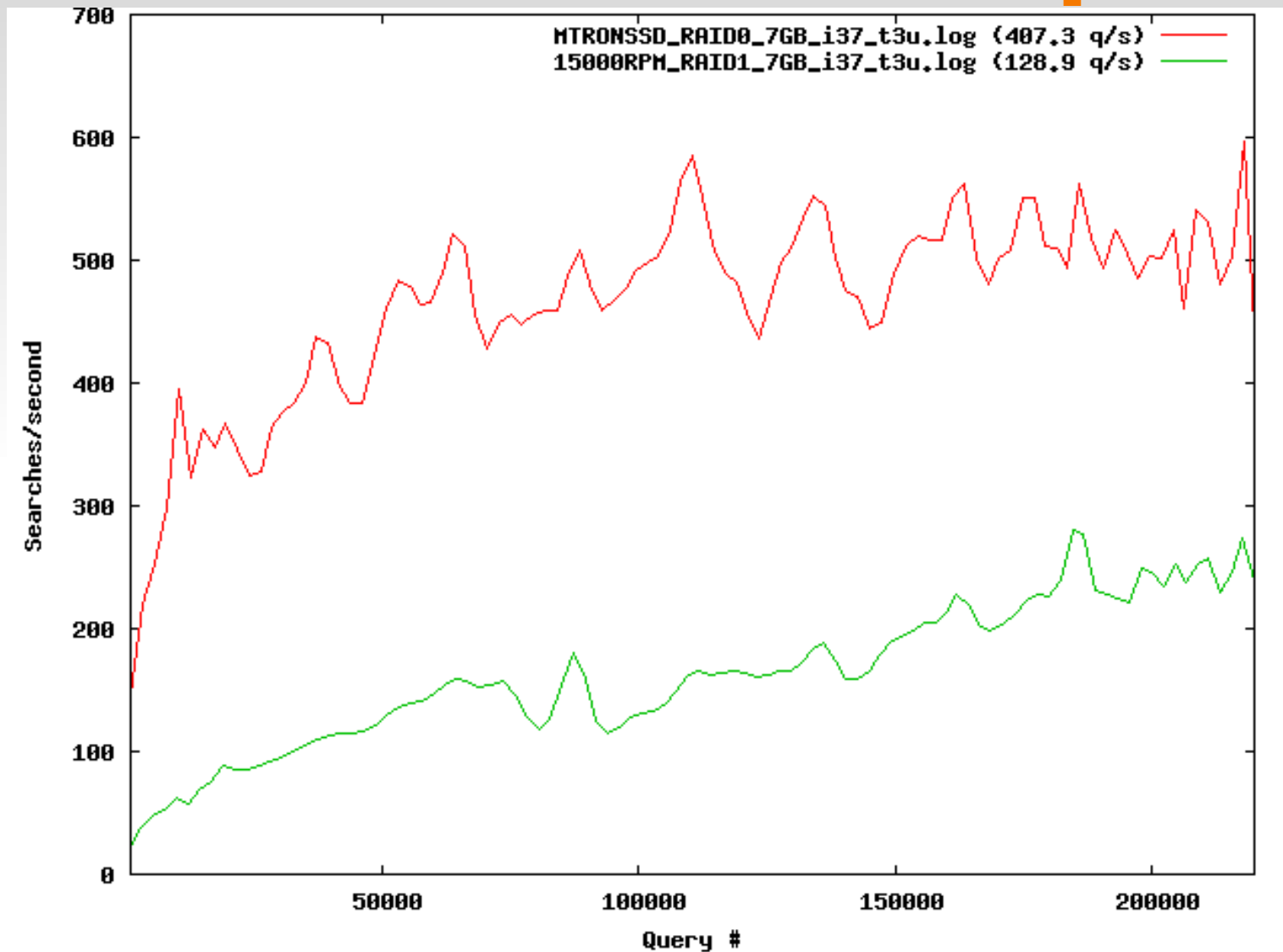
te@statsbiblioteket.dk

Lightning talk with slides created with lightning speed
(sorry about the bitmaps – eps is not too well supported)

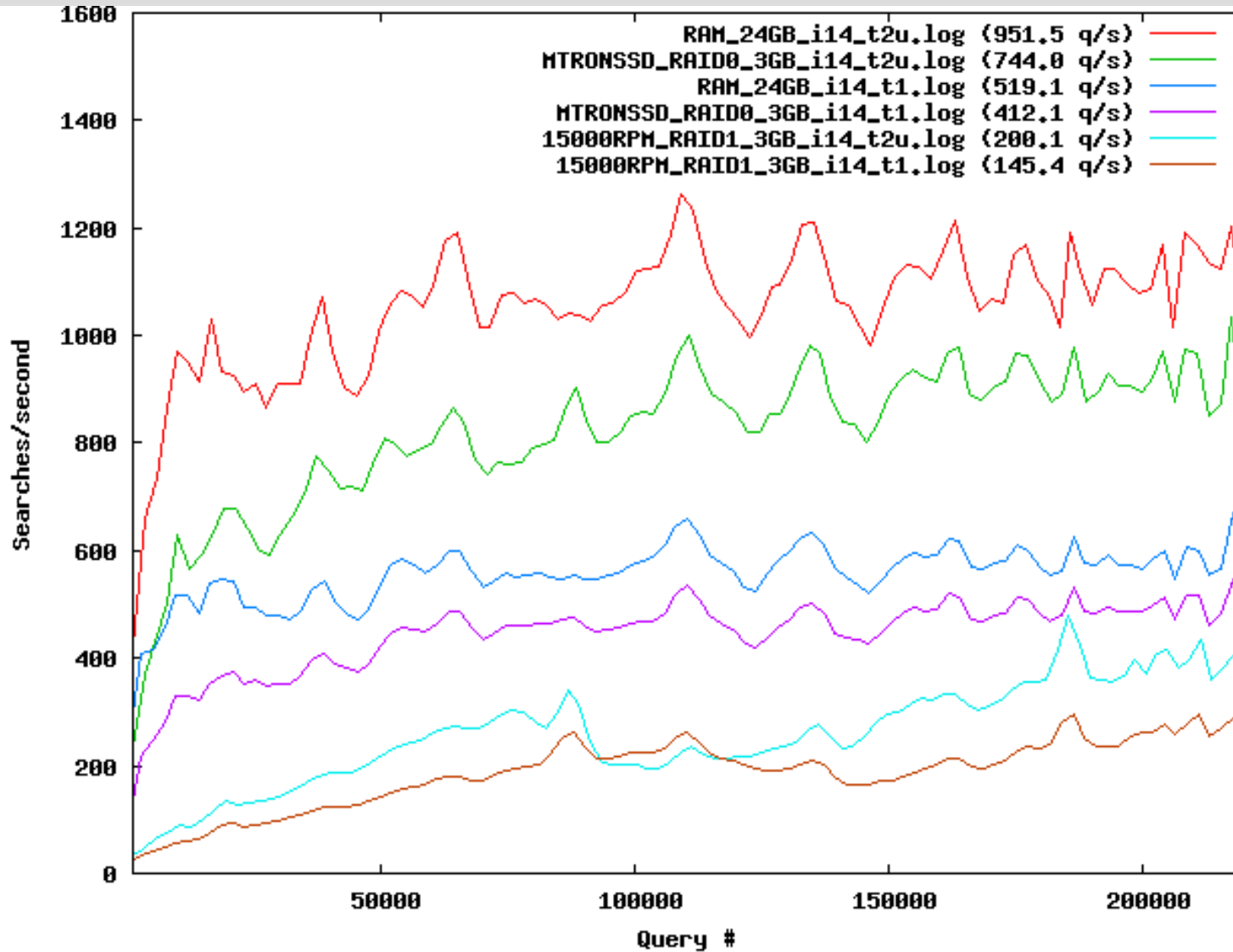
What slows search speed?

- Wrapping in layers and services
- Query logic and parsing
- ...
- Random access speed (←pick me, pick me!)

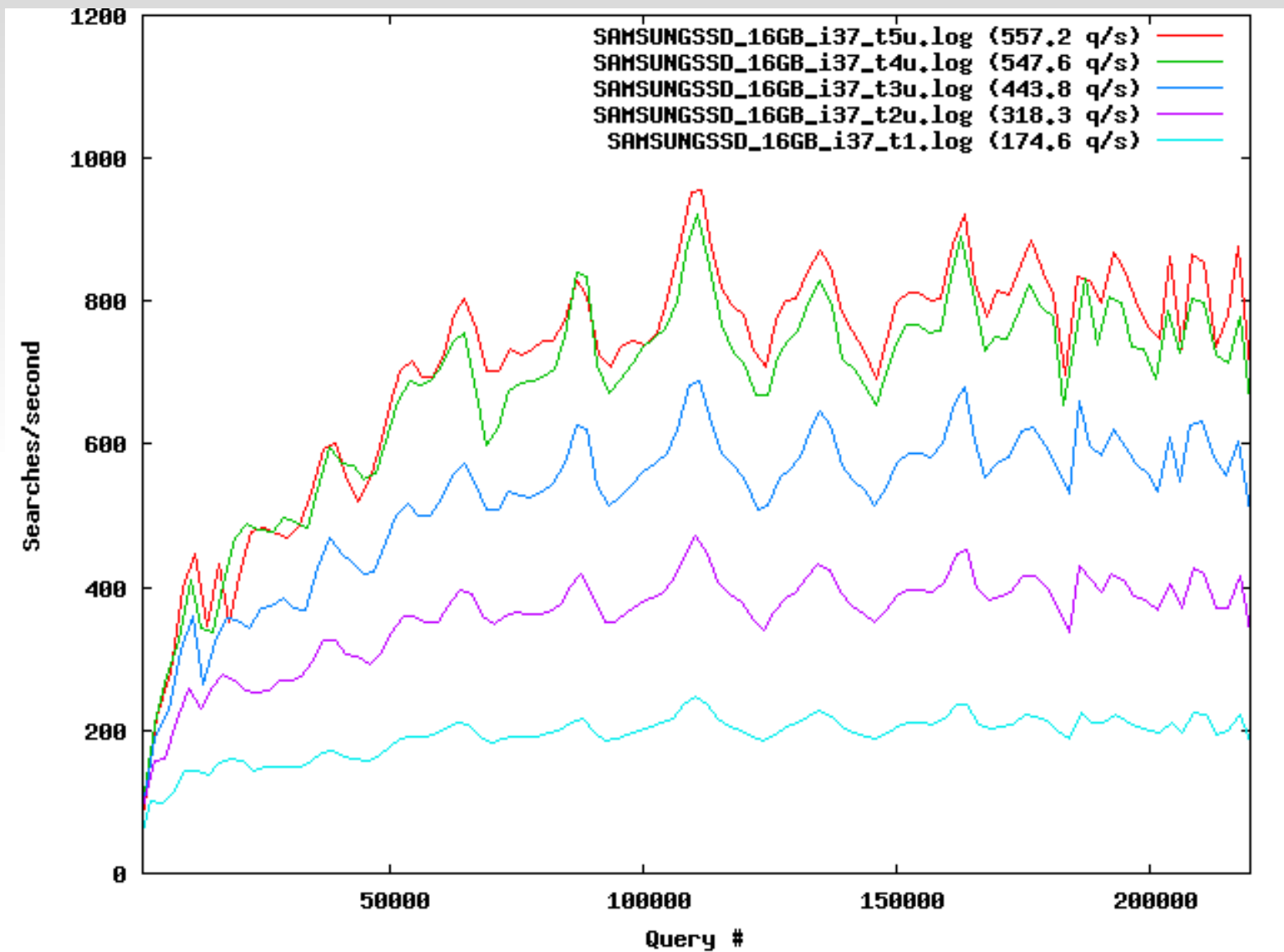
8M docs, 37GB, real queries



What about RAM?



Bottleneck?



Warmup?

